



+86 (21) 5959 6020

www.funlandia.com

info@funlandia.com

20F, David International Mansion, No.1187 Akesu Road,  
Jiading District, Shanghai, China



**Funlandia**  
TURNKEY PLAY SOLUTIONS

**COMPANY OVERVIEW**



CREATE MEANINGFUL  
PLAY FOR FAMILIES

COMPANY OVERVIEW

TABLE OF CONTENT

About Us ..... 02

Strengths ..... 02

Product Lines ..... 05

Process ..... 06

Projects ..... 07

Service ..... 42

Safety ..... 42

Quality ..... 43

Partners ..... 44



# ABOUT US

Established in 2007, Funlandia has grown into one of the largest and most innovative manufacturers of indoor play equipment worldwide. With over 3,000 projects completed globally, we are recognized for our engineering excellence, design-driven solutions, and commitment to superior quality. Our extensive product line features over 20 series and numerous individual pieces, catering to the needs of all ages, from toddlers to adults, while servicing different industries.

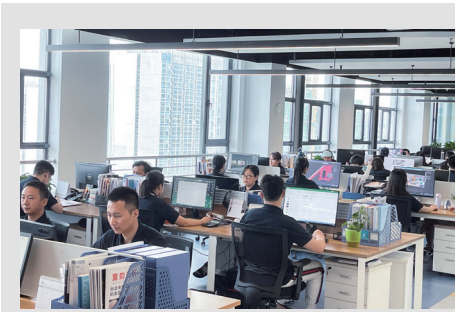
Guided by our motto, "Create meaningful play for families," we focus on crafting experiences that foster physical and social development through play.



# STRENGTHS

## ▶ DESIGN AND ENGINEERING

Our designers work diligently to integrate our products and customer's environment into a unique solution for each client: making good use of space, making it look good and creating fun for the players. All of these serves but one purpose, to maximize our customer's revenue. The design is then developed with great care by our experienced engineers, so the finished product will be faithful to initial designs, and fully compliant with safety and quality standards.



## ▶ MANUFACTURING

With six ISO 9001-certified facilities and over 20,000 square meters of production space, we keep all critical processes in-house and maintain strict quality standards throughout our production.



## ▶ INSTALLATION

We have over 60 dedicated installation technicians who travel the world to install our indoor play equipment. They're trained in the unique skills that are needed in our industry and they're also true experts in our products. Our installation technicians are organized by a team of project managers who are on hand to help with any part of the process.



## ▶ WARRANTY AND SERVICE

Our products are manufactured for a 10+ year lifecycle and come with an industry-beating 12-month globally serviced warranty. Our after-sales team inspect every installation and are there to support clients should they need any help with the equipment.



## ▶ SAFETY

Safety always comes first at Funlandia, we adhere to all major safety standards in the world, ASTM, EN, CSA, and AS. Our materials and completed products are tested by the world-renown TÜV and SGS laboratories. Quality control is ensured at every stage from R&D through to final manufacture.







ANNUAL REVENUE

OVER **\$ 30,000,000** USD



OUR EXPERT TEAM

OVER **300** TOTAL HEADCOUNT  
**80+** DESIGNERS AND ENGINEERS



FACTORY

**20,000** SQM, **6** PLANTS  
CERTIFIED PRODUCTION HUB  
IN-HOUSE TESTING LAB



GLOBAL FOOTPRINT

OVER **3,000** WORLDWIDE PROJECTS  
OVER **500** NORTH AMERICA PROJECTS

PRODUCT LINES

We now have two families of product: our Children Park Solutions, and Adventure Park Solutions. The rich product lines allow us to deliver comprehensive projects that are so versatile that they suit almost any customer profile, regardless of their age and budget.

CHILDREN PARK SOLUTIONS



The Children Park Solutions are designed for ages between 2 to 10, with an emphasis on fun and development of physical, cognitive and social skills.



ADVENTURE PARK SOLUTIONS



The Adventure Park Solutions are more challenging, great for exercise and offers thrill for bigger children and adults.



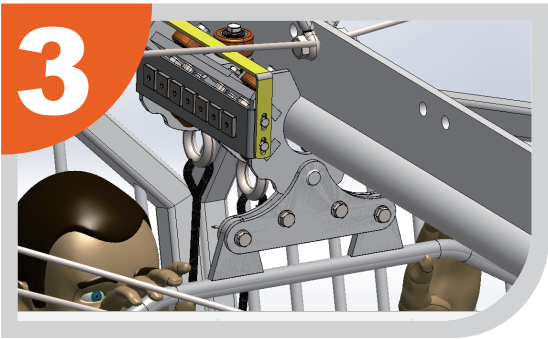


# PROCESS



## MASTER PLANNING

Based on the client's business goals, we draft layouts and create concepts that make the best use of all resources, serving to the ultimate purpose – creating a successful business.



## ENGINEERING

Our experienced engineers will further develop the design into CAD drawings that contain all engineering details, and guarantee compliance with safety and quality standards.



## INSTALLATION

Our professional team of technicians travels to the client's site to install the equipment, a team of project managers will help manage and coordinate the entire process.



## DESIGN

We help clients choose the most suitable products and integrate them into the spatial design, ergonomically and aesthetically; upon request, we also provide IP, theming, and interior design for the clients.



## PRODUCTION

Using up-to-date machinery, our experienced staff manufacture the products while maintaining ISO 9001 quality standards throughout the production process

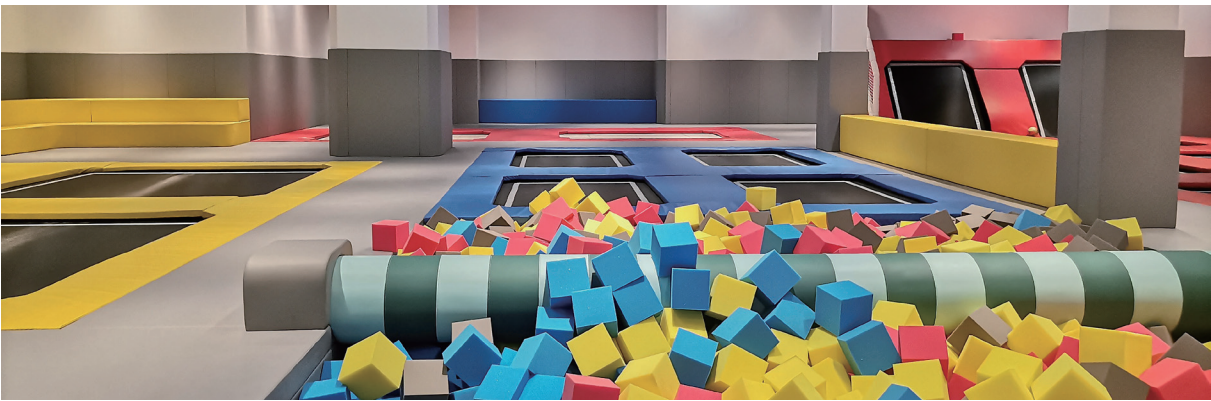


## MAINTENANCE

When the installation is completed, our after-sales team will inspect the installation and help train the client's staff in maintenance; they are also on call 24/7 should any help be needed with the equipment.

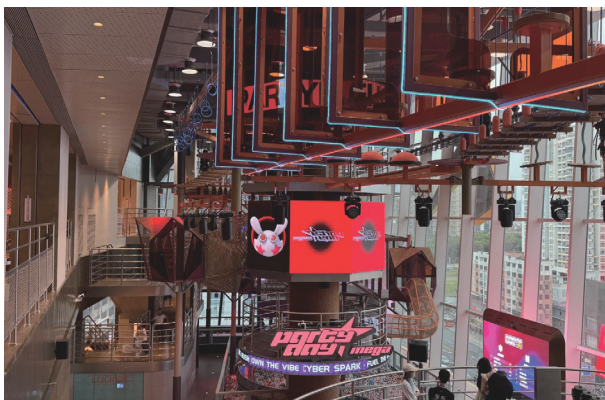
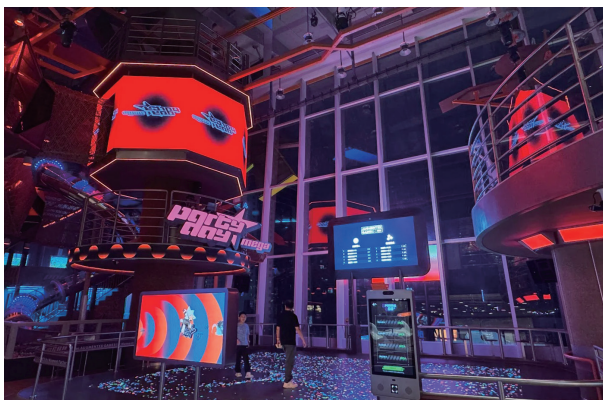
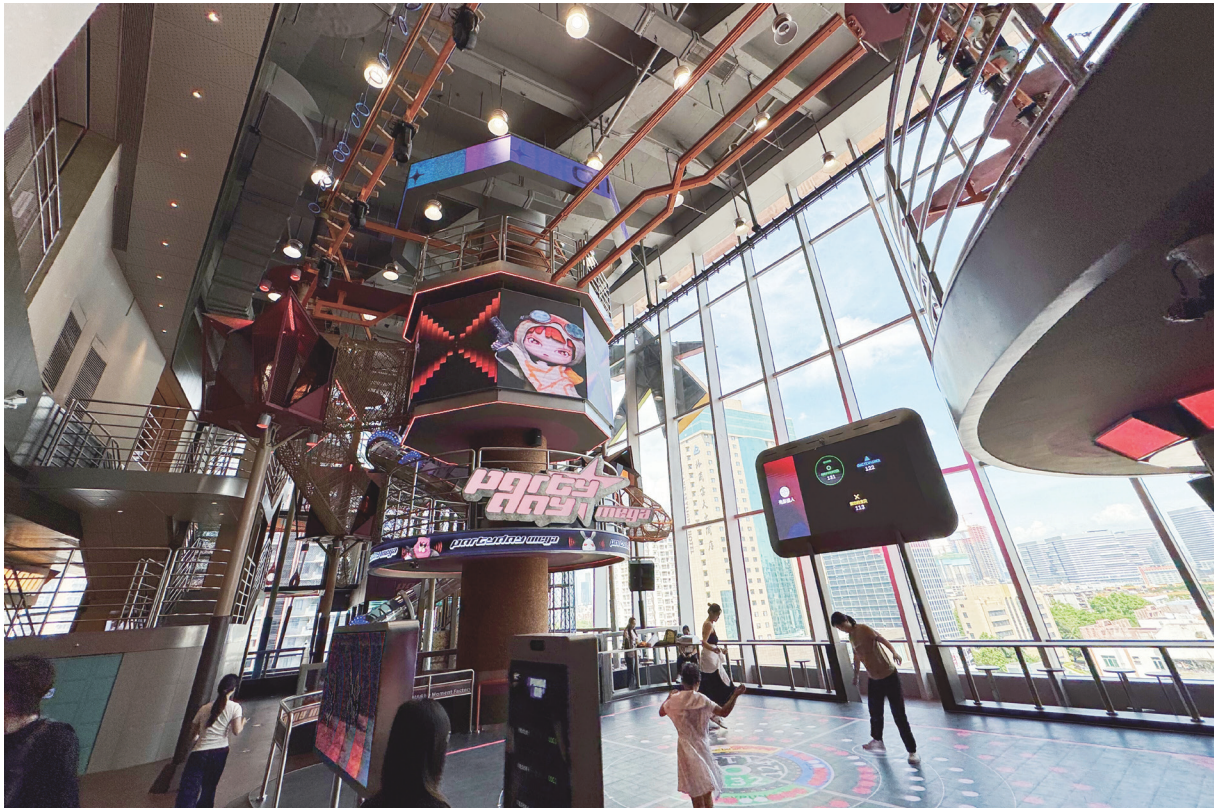
# PROJECTS

## H-PARK | CHINA

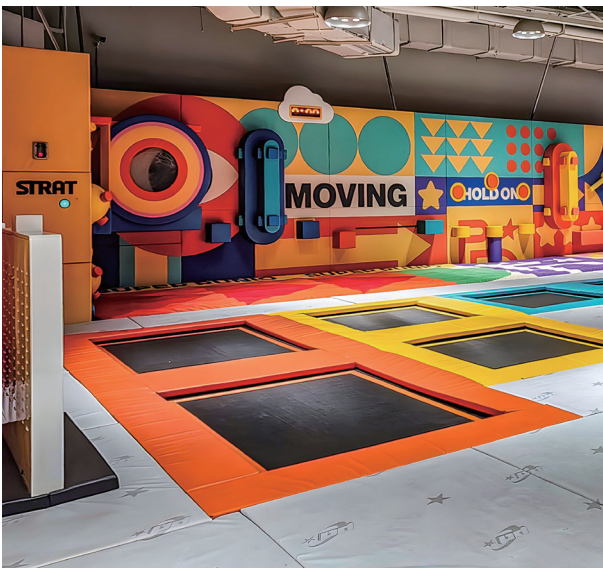
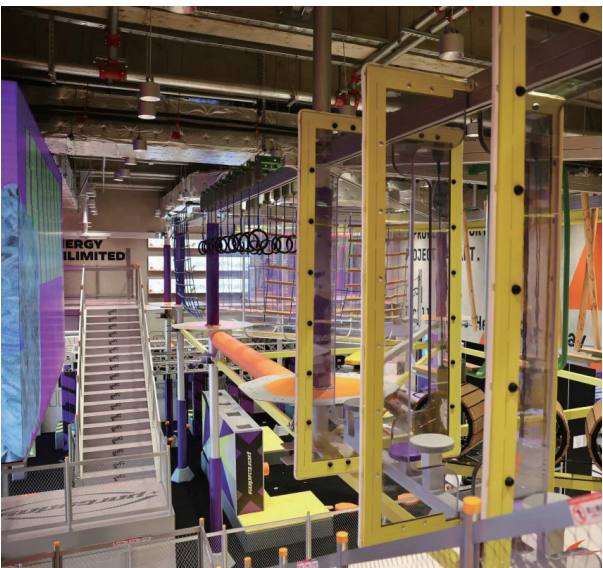




PARTY DAY | CHINA

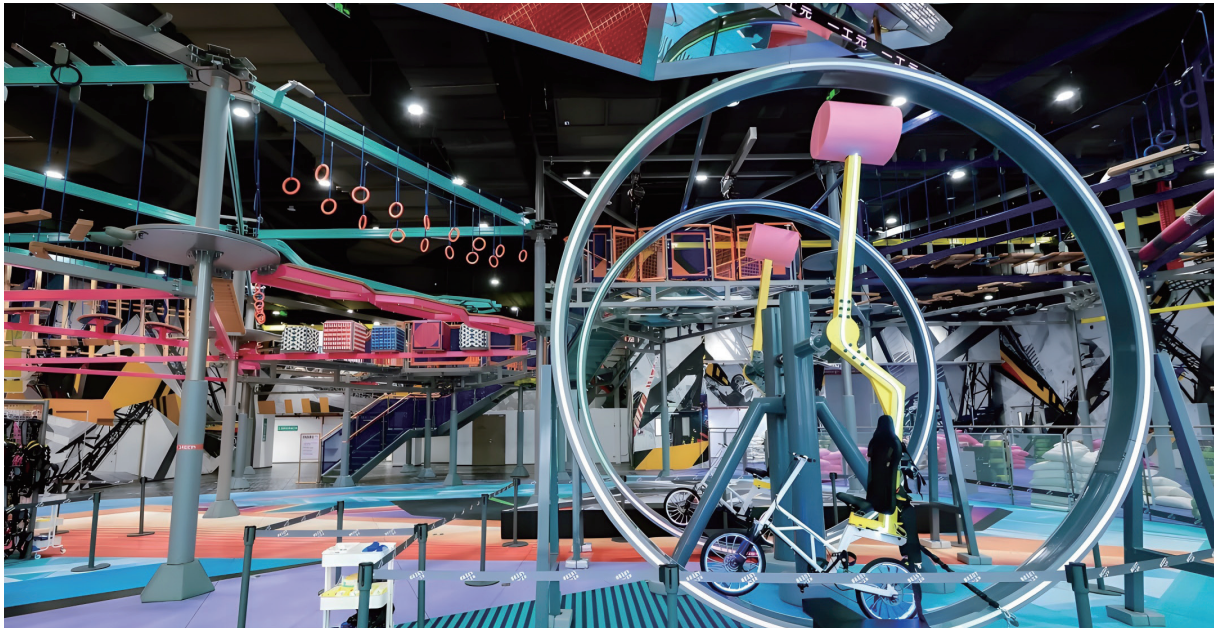


PARTY DAY | CHINA

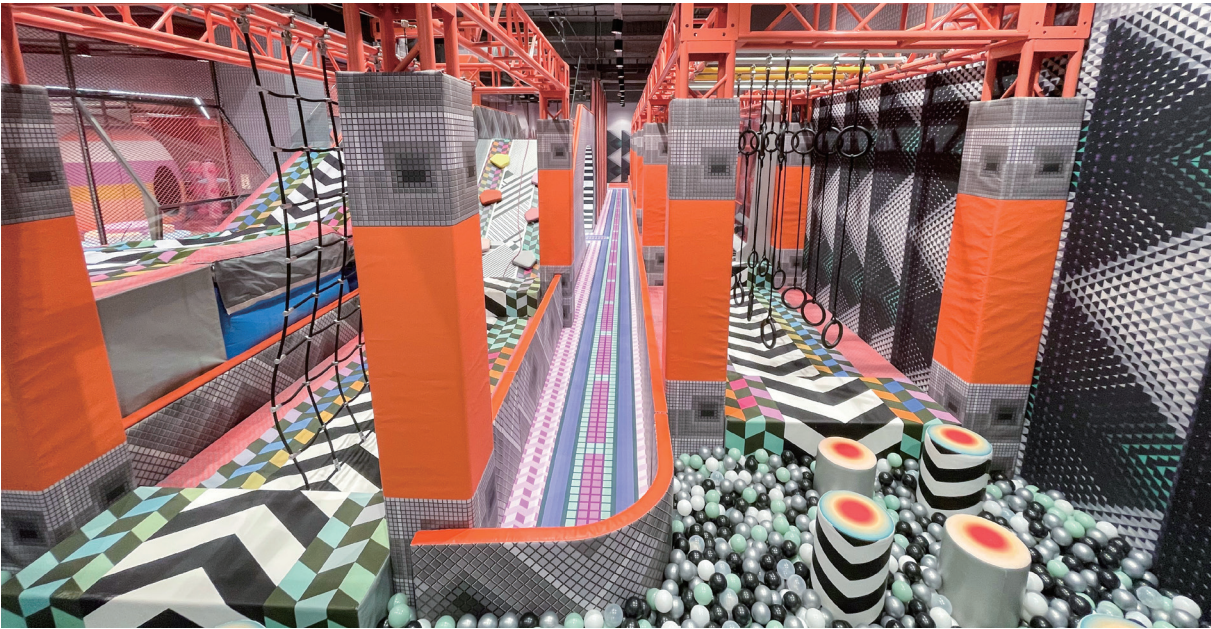




BE1ST | CHINA

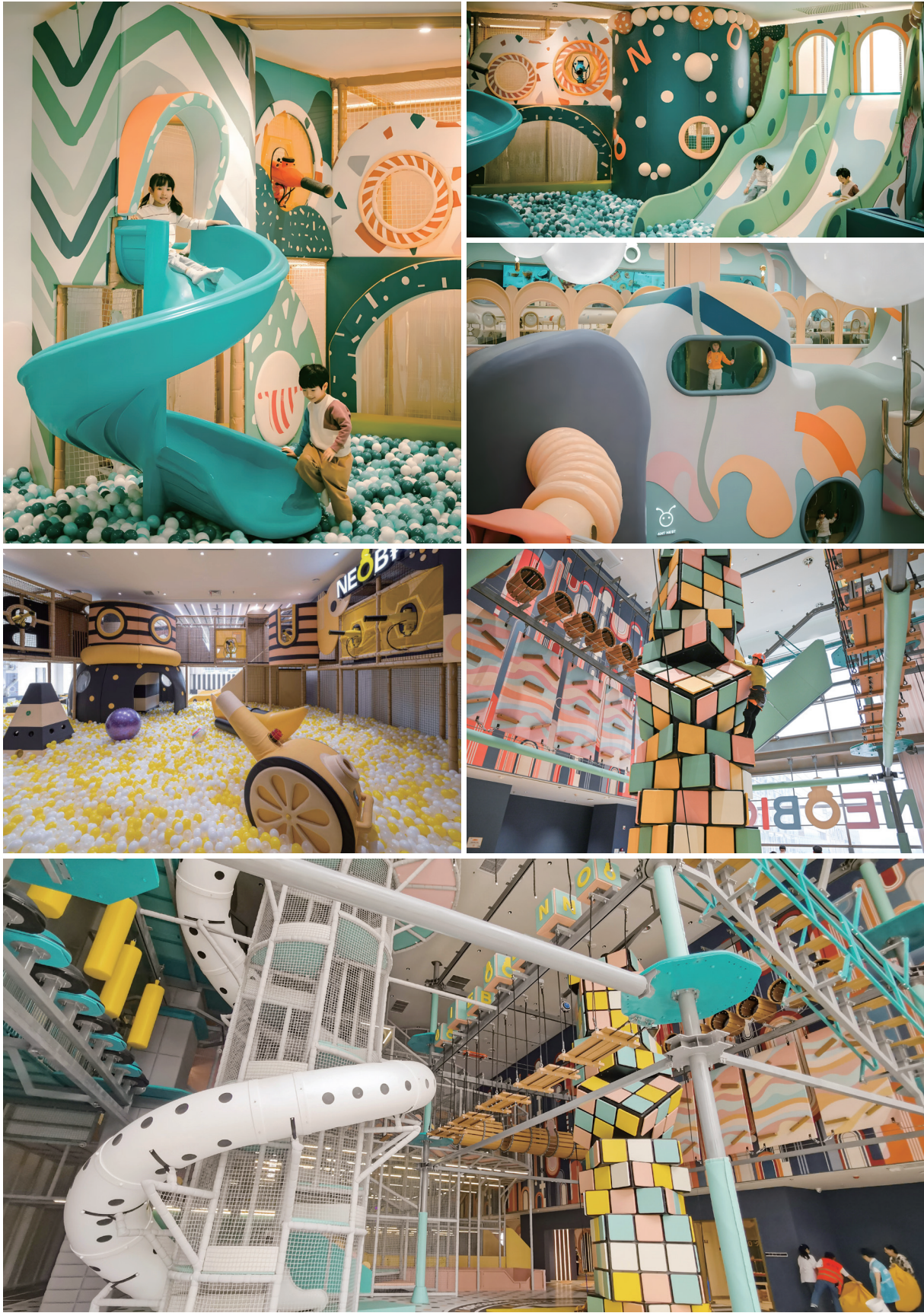


BE1ST | CHINA





NEOBIO | CHINA



NEOBIO  
CHINA





AI OTHAIM | DUBAI



AI OTHAIM | SAUDI ARABIA





1NOOS | SAUDI ARABIA



SPARKYS | SAUDI ARABIA





# CHUCK E. CHEESE | RIYADH, KSA



# MARYMARIS LITHUANIA





TASHKENT  
UZBEKISTAN

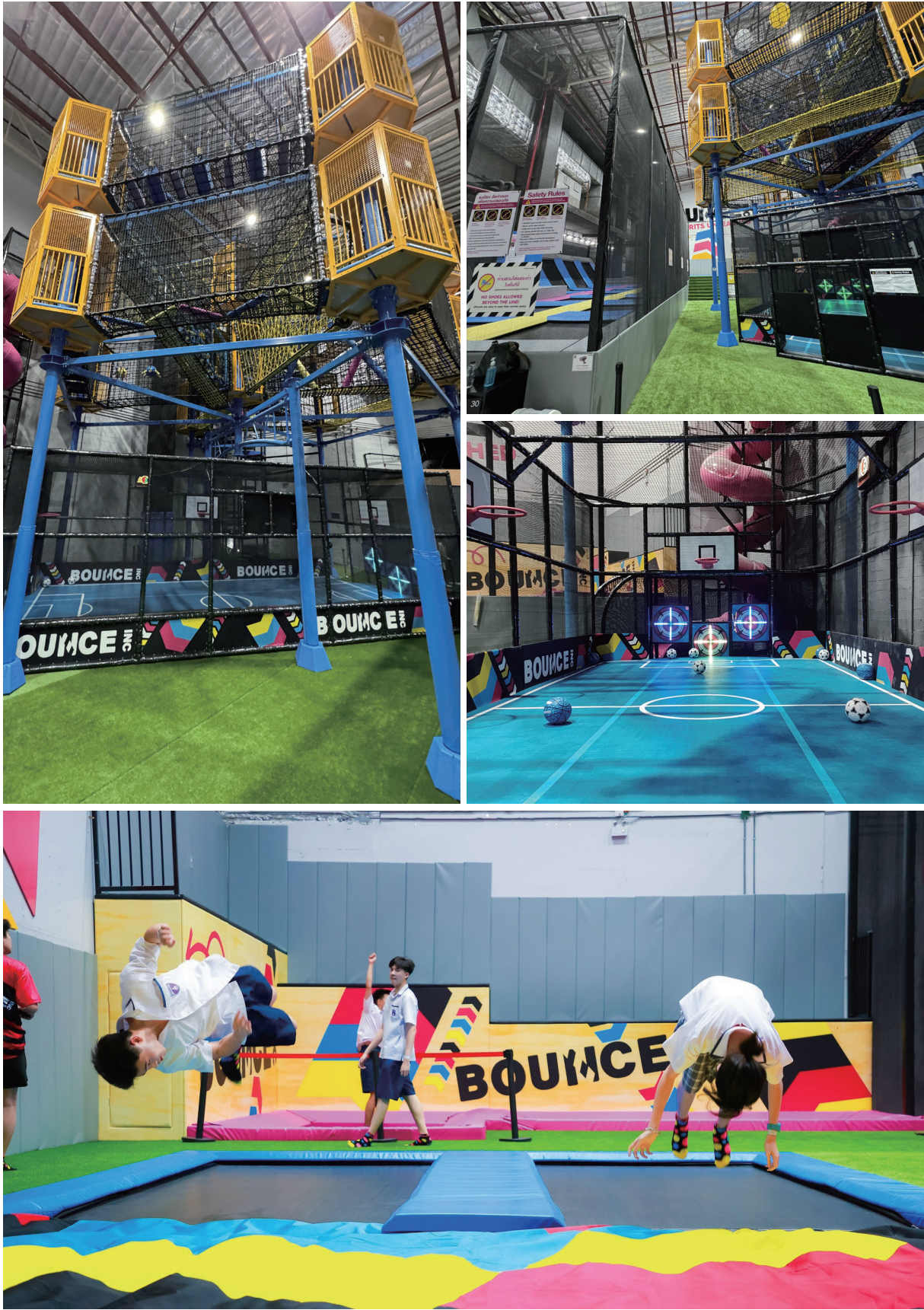


AUSTRALIA | MIDDLE EAST | SOUTHEAST ASIA

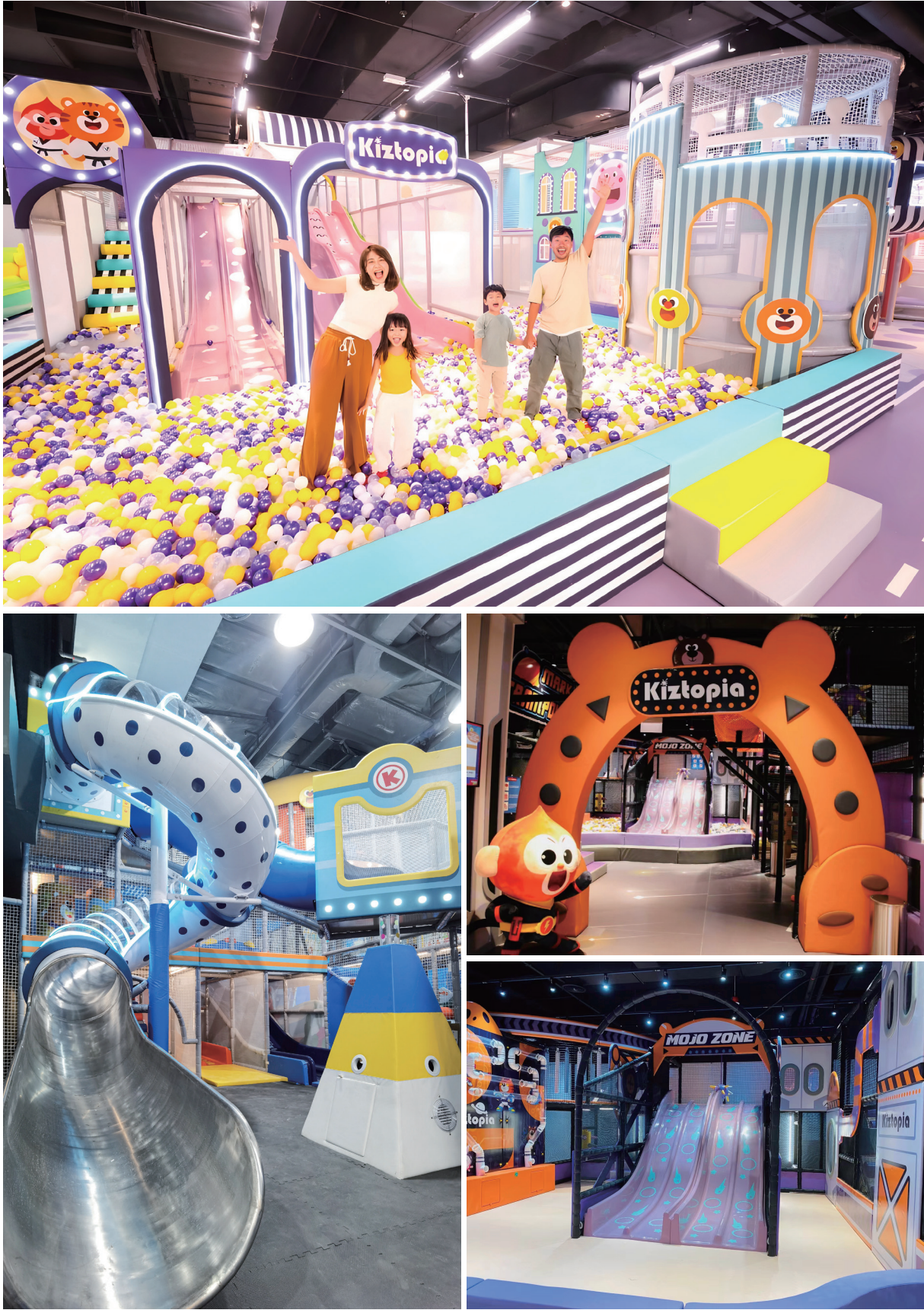




AUSTRALIA | MIDDLE EAST | SOUTHEAST ASIA



SINGAPORE







JAKARTA  
INDONESIA



FUN GARDEN | CHINA





CARTOONY SAFARI | CHINA

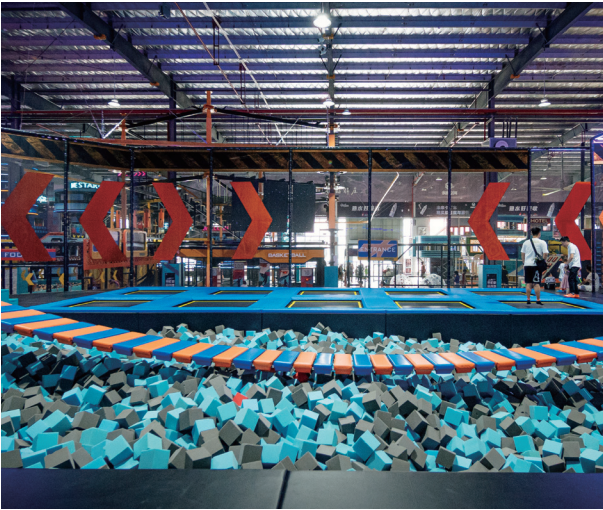
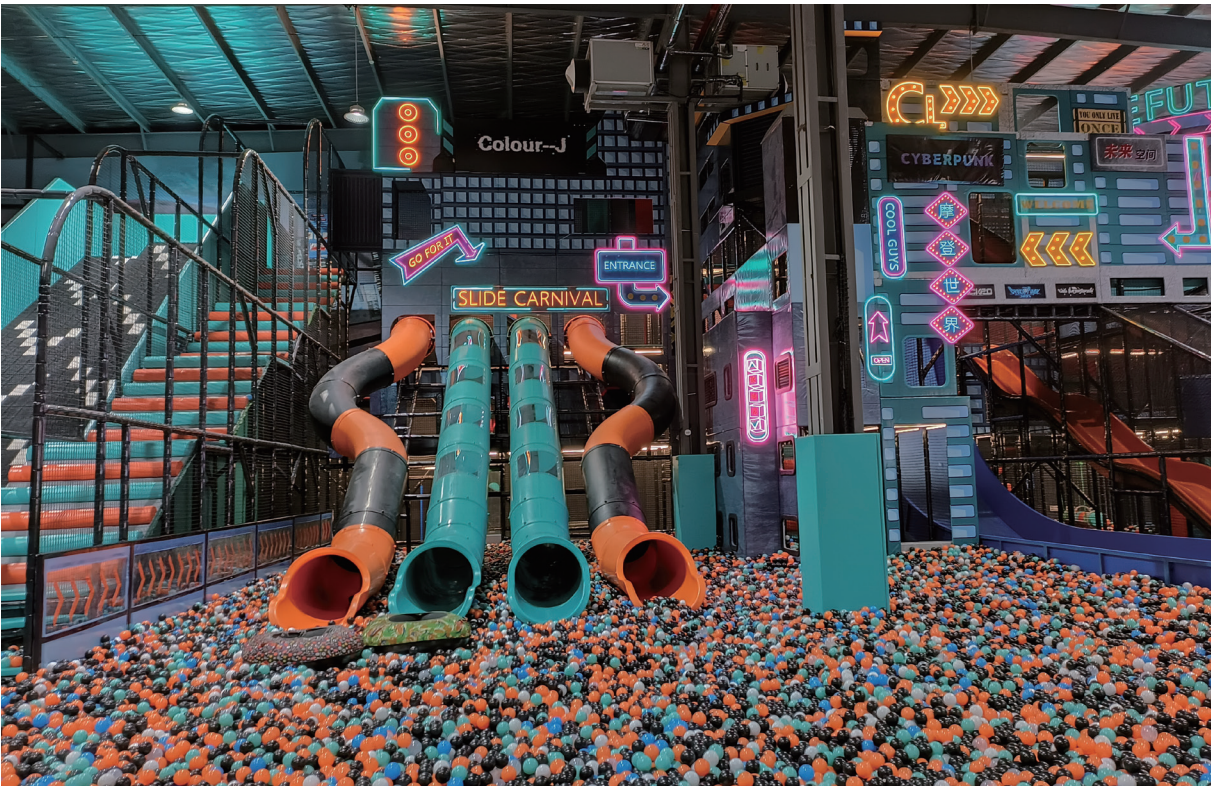
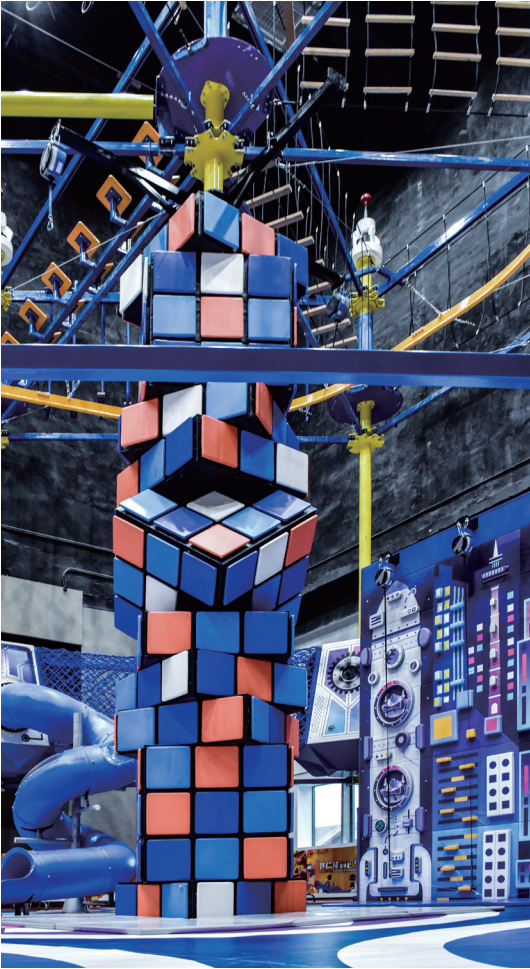


BON&CHEERS<sup>TM</sup>  
FUN HOUSE  
CHINA





LONGXIN SPORTS | CHINA

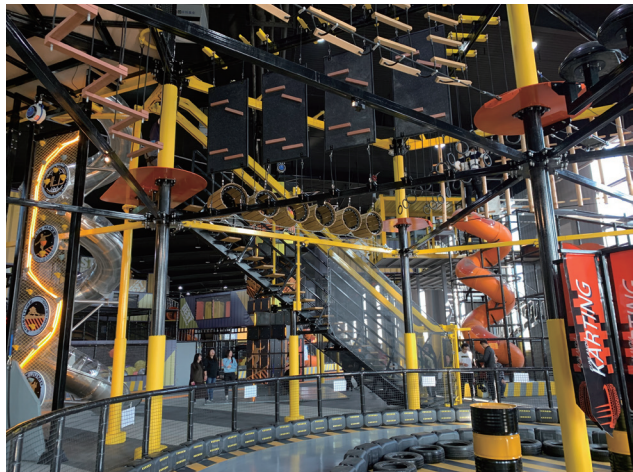
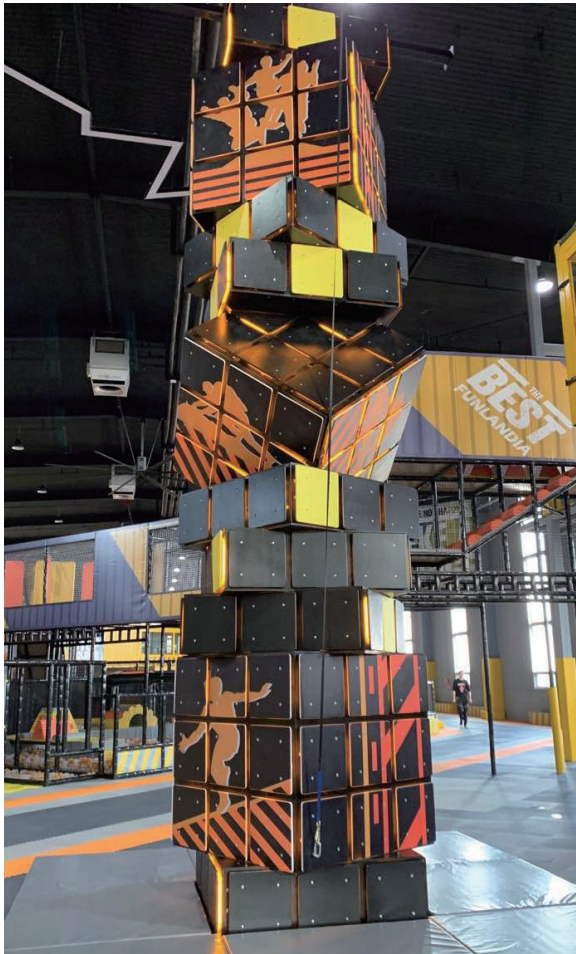


FUTURE SPACE  
CHINA

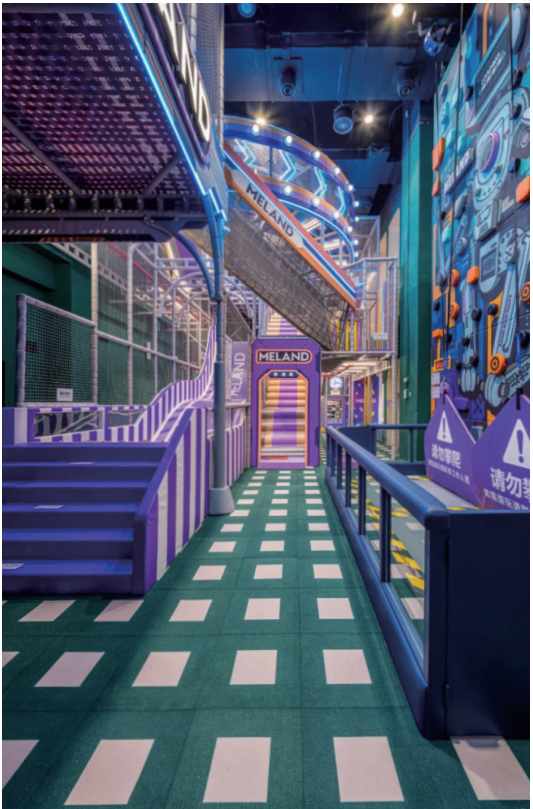




HAPPY ISLAND | CHINA



MELAND  
CHINA

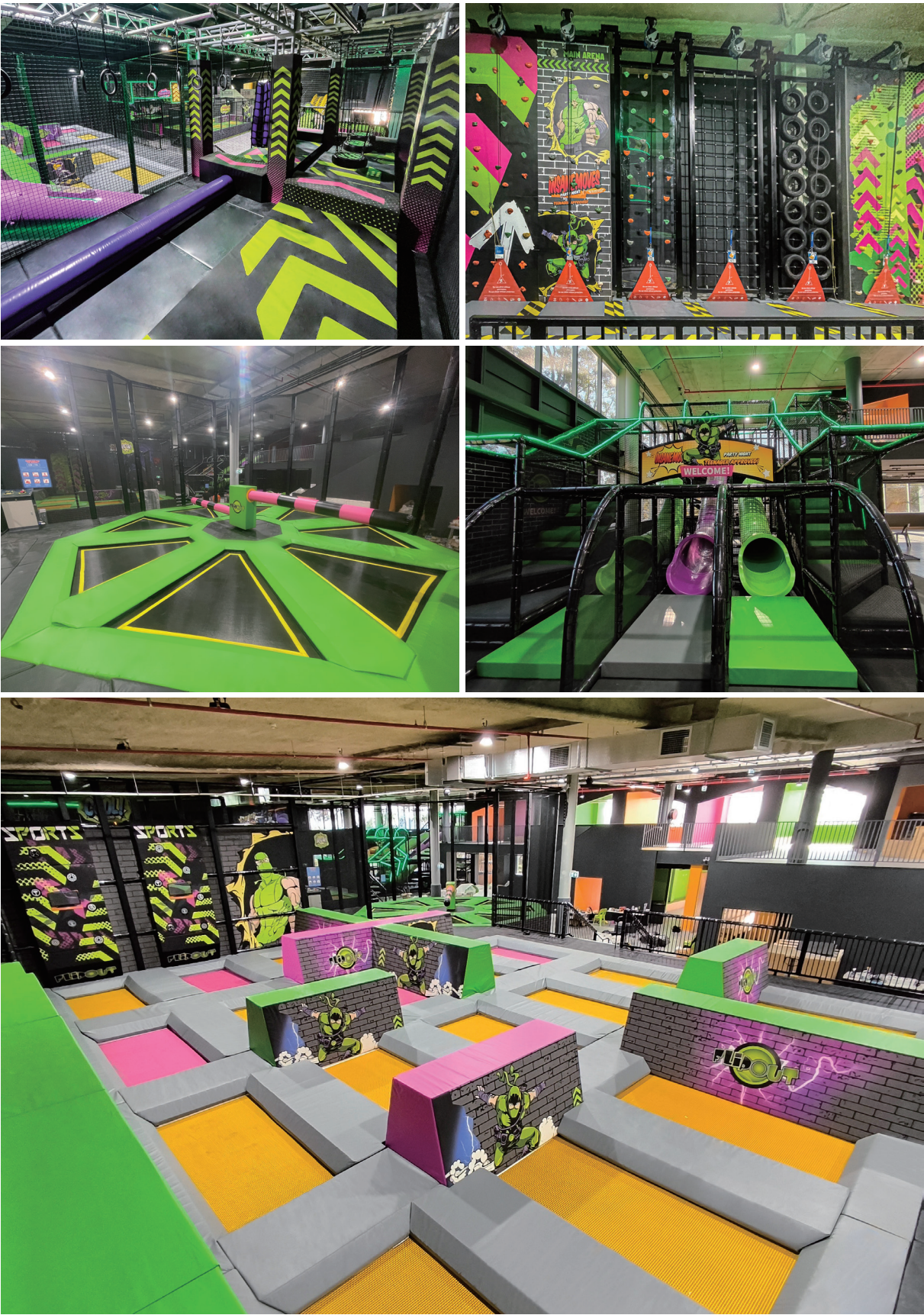




LILLE | FRANCE



FLIPOUT | AUSTRALIA





MICHIGAN | USA



TEXAS | USA







NEW JERSEY  
USA

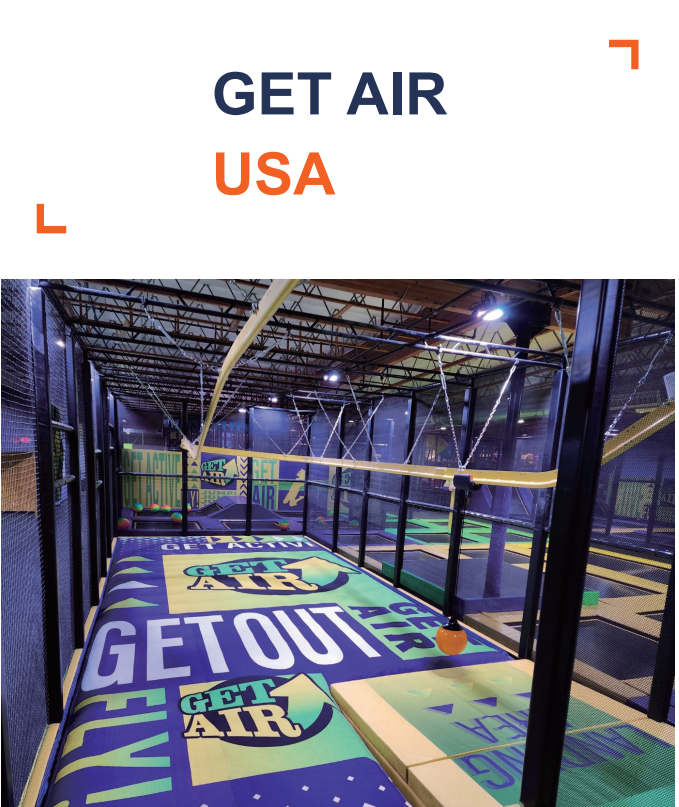


TENNESSEE | USA





LOST WORLDS | USA





EMPIRE | USA



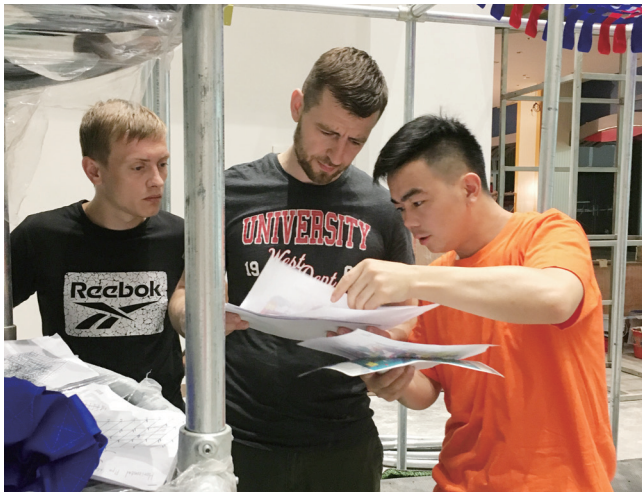
MARYLAND | USA





SERVICE

Should customers need any help, our dedicated after-sales service team is always there to provide support.



- After-sales service department inspects products after installation, to ensure all are installed according to standards.
- Timely response to any maintenance needs, to minimize downtime in the customer's operation.
- A user manual is provided; we can also help customers with staff training on maintenance and service.

SAFETY

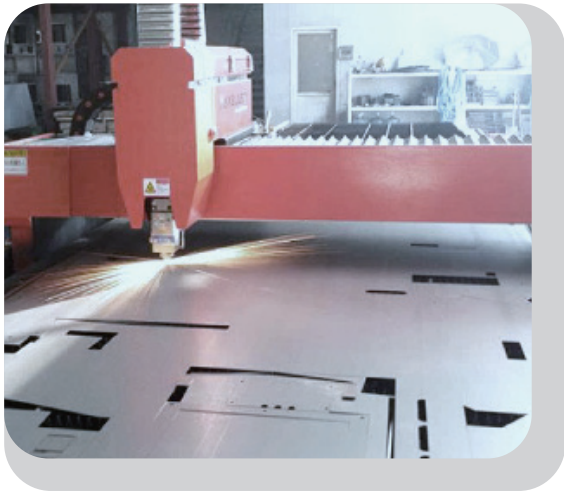
Safety is always our first priority, we meet all major international safety standards, and implement safety disciplines and practices in every process of our work.



QUALITY

As an ISO 9001-certified manufacturer equipped with an SGS-accredited laboratory, we adhere to the highest quality standards throughout every stage of production.

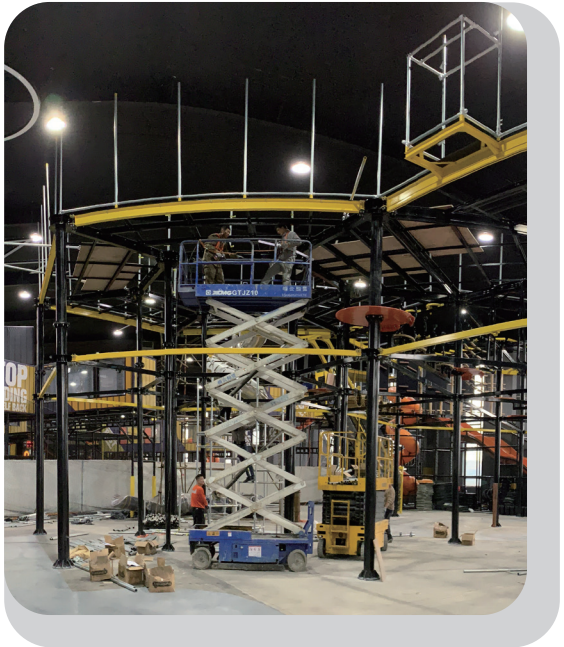
UP-TO-DATE MACHINERY



SGS-ACCREDITED TESTING LAB



ISO STANDARD INSTALLATION





# YOUR TRUSTED GLOBAL PARTNER

Our relationship with customers is not just a simple product-supply relationship, but a mutually beneficial partnership for common development and win-win outcomes.

